



American Reliance, Inc.

5" HANDHELD PDA

DA05 WinCE 5.0

USER'S GUIDE

Copyright © 2009 American Reliance, Inc. All rights reserved.

No part of this publication may be processed; such as reproduced, transmitted, transcribed, stored in a retrieval system, translated into any computer language in any form, or by any means of electronic, mechanical, magnetic, optical, chemical, or others without the prior written permission of the manufacturer.

The manufacturer reserves the right to revise this publication and to make changes to the contents hereof without obligation to notify any person of such revision or changes.

The manufacturer makes no representations or warranties, either expressed or implied, about the contents and specifically disclaims any warranties as to merchantability or fitness for any particular purpose. Any of the software described in this manual is sold or licensed "as is". Should the programs prove defective following purchase, the buyer (and not the manufacturer, its distributor, or its dealer) assumes the entire cost of all necessary servicing, repair and any incidental or consequential damages resulting from any software defects.

Trademark Acknowledgments

Microsoft, Windows CE, Pocket PC, and Windows Mobile are registered trademarks of Microsoft Corp.

All product and company names are trademarks or registered trademarks of their respective holders.

EMC and Safety Notice

Federal Communications Commission Radio Frequency Interference Statement

This equipment generates, uses, and can radiate radio frequency energy and if not installed and used in accordance with the instructions, may cause interference to radio communications. This equipment has been tested and found to comply with the limits for a class B digital device, pursuant to part 15 of the FCC Rules. These limits are designed to provide reasonable protection against harmful interference in a residential installation.

This equipment generates uses and can radiate radio frequency energy and, if not installed and used in accordance with the instructions, may cause harmful interference to radio communications. However, there is no guarantee that interference will not occur in a particular installation. If this equipment does cause harmful interference to radio or television reception, which can be determined by turning the equipment off and on, the user is encouraged to try to correct the interference by one or more of the following measures:

- Re-orient or relocate the receiving antenna.
- Increase the separation between the equipment and receiver.
- Connect the equipment into an outlet on a circuit different from that to which the receiver is connected.

- Consult the dealer or an experienced radio/TV technician for help.

This Transmitter must not be co-located or operating in conjunction with any other antenna or transmitter.

Any changes or modifications (including the antennas) made to this device that are not expressly approved by the manufacturer may void the user's authority to operate the equipment.

This equipment complies with FCC RF radiation exposure limits set forth for an uncontrolled environment. To maintain compliance with FCC RF exposure compliance requirements, avoid direct contact to the transmitting antenna during transmitting.

Countermeasures if interference occurs

You are encouraged to do the following if interference occurs while you are operating the device:

- Turn OFF the unit and unplug the AC adapter from the outlet to see if the interference disappears.
- Connect the AC adapter to the outlet in another room and check if the interference still exists.
- Use an outlet that is far away from the interfered appliance.

- Re-orient your computer in respect to the interfered appliance to see if there is improvement.

If all of these failed, please call your dealer for help.

CE

This equipment complies with the requirements set out in the Council Directive on the Approximation of the laws of the Member States relating to Electromagnetic Compatibility (89/336/EEC). For the evaluation regarding the electromagnetic compatibility, the following standards were applied:

EN55022 +A2:2003 Class B EMI Conduction and Radiation

EN61000-3-2 Harmonics

EN61000-3-3 +A1:2001 Flicker (Voltage fluctuation)

EN55024 EMS

EN61000-4-2 +A2:2001 ESD

EN61000-4-3 +A1:2002 RS

EN61000-4-4 +A2:2001 EFT

EN61000-4-5 +A1:2001 Surge

EN61000-4-6 +A1:2001 CS

EN61000-4-8 Power-Frequency Magnetic Field

EN61000-4-11 +A1:2001 Voltage Dips and Voltage Interruptions

LVD EN60950-1:2001

ETSI EN301 489-01 V1.4.1 EMC Standards for Radio Equipment

ETSI EN 301 489-17 1.2.1 EMC Standards for 2.4GHz Wideband Transmission Systems)

ETSI EN 300 328-2 V1.2.1 EMC Standards for Using Spread Spectrum Modulation Techniques

UL, TÜV

AC Adapter (EN60950 LVD is included in TÜV)

Environmental Information, Material Safety and Recycling

***Caution:** Risk of explosion if battery is replaced by an incorrect type. Dispose of used batteries according to the instructions.*

All materials used in the construction of this equipment are recyclable or environmentally friendly.

Please recycle the packing materials, and at the end of the product's life, all other materials by local regulations.

Please refer “Material and Recycling” for the contents of the materials.

- The equipment may still contain tiny amount of hazardous substances for health and environment, though those are below control level.
- To avoid spreading such substances into the eco system, and to minimize the pressure on the natural, you are encouraged to use the appropriate take-back. Those will reuse or recycle most of the materials in a sound way after end life.
- The crossed bin symbol indicates proper disposal is required.
- For more information on collection, reuse and recycling, please consult local or regional waste administration.
- You can also contact the dealer for more information on the environmental details of the equipment.

CONTENTS

GETTING STARTED.....	1
WHAT'S IN THE BOX	1
QUICK START	2
CONTROLS, INDICATORS, AND PORTS	3
OPERATING ENVIRONMENT AND RUGGEDNESS	10
COMPONENTS AND FUNCTIONS	12
AC ADAPTER.....	12
BATTERY	12
CHARGE BATTERY	13
SWAP BATTERY	14
FIX THE STYLUS WITH TETHER.....	15
CRADLE (OPTION).....	16
PCMCIA SLOT	19
SD SLOT	19
BASIC OPERATION	20

GET HELP	20
SYNCHRONIZING DATA WITH PC	20
RESET THE SYSTEM.....	21
WIRELESS LAN (OPTION).....	26
BLUETOOTH (OPTION)	30
GPS (OPTION).....	61
SPECIFICATIONS.....	63
CPU.....	63
MEMORY	63
DISPLAY.....	63
TOUCH SCREEN	64
I/O PORTS	64
SYSTEM UNIT DIMENSIONS AND WEIGHT	65
AC ADAPTER.....	65
BATTERY	66
MATERIALS AND RECYCLING.....	67
MAINTENANCE / SERVICE	68
CLEANING.....	68
TROUBLESHOOTING	68

GETTING STARTED

What's in the Box

The following components come with your handheld computer.

If anything is missing or damaged, please notify the dealer immediately.

- Handheld computer unit
- AC adapter
- AC power cord
- User's guide
- USB Data sync cable
- Spare stylus (with tether)

Quick Start

- Attach the AC adapter to AC outlet. The adapter LED indicates the power is ready.
- Insert the battery and then plug in the adapter to handheld computer. Charge LED will light up till the battery is full charged. Charge time is approximately 4 hours.
It's recommended that battery is fully charged before set up.
- Press the power button momentarily to turn ON (the most upper-right button is power button).
- Tap **Backlight** to try basic setting.
- Press power button momentarily to turn OFF.

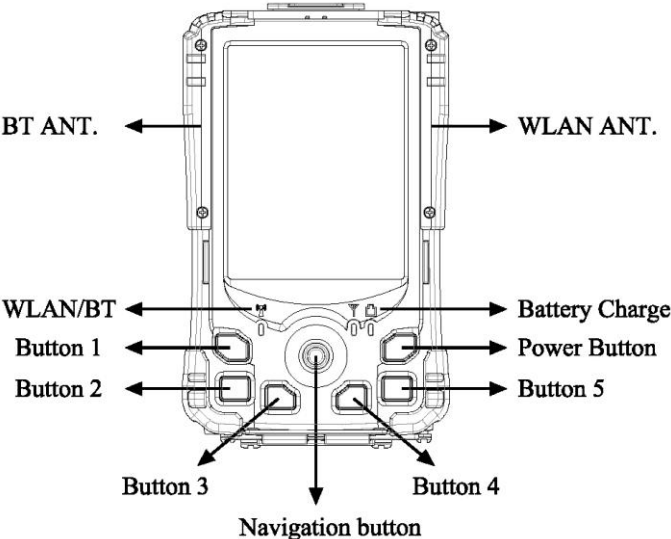
Notice:




The handheld computer is always powered. Even main battery is removed there is internal backup battery to sustain memory data (for <5 minutes approximately). The power button only activates suspend (OFF = suspend on this manual).

Please check battery status regularly and recharge when necessary.

Controls, Indicators, and Ports

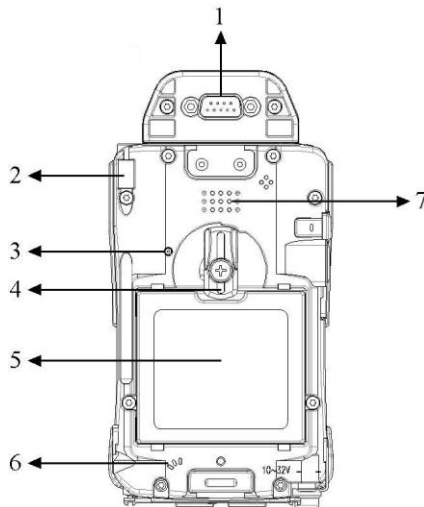
Front:



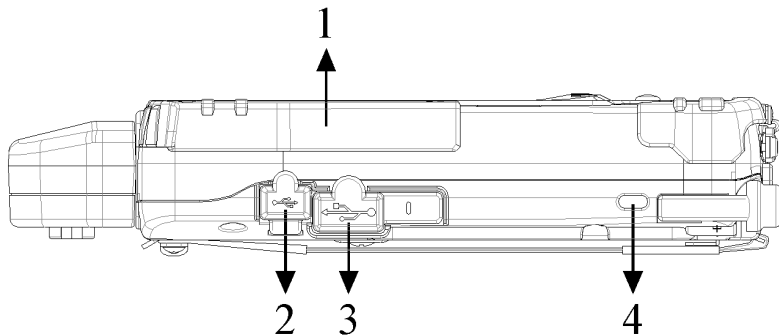
-
1. **Button 1** (Wireless or Flight button)
Turn ON/OFF the wireless device (Option: WLAN, Bluetooth, GPS)
 2. **Button 2** (User programmable)
 3. **Button 3** (User programmable)
 4. **Navigation Button**
[Left], [Right], [Up], [Down] 4 directions
[Enter] at the center
 5. **Button 4** (User programmable)
 6. **Button 5** (User programmable)
 7. **Power Button**
Suspend or Wake up the system.
 8.  **Battery Charge Indicator** (Charging: ON Orange, Full: OFF)
 9.  **Reserved Indicator** (No function on Win CE)
 10.  **WLAN/Bluetooth Indicator** (Blue)

Rear: (Drawing shows optional GPS)

1. Serial Port DB9 Connector
2. Stylus
3. Reset Button
4. Battery Knob
5. Battery
6. Microphone
7. Speaker

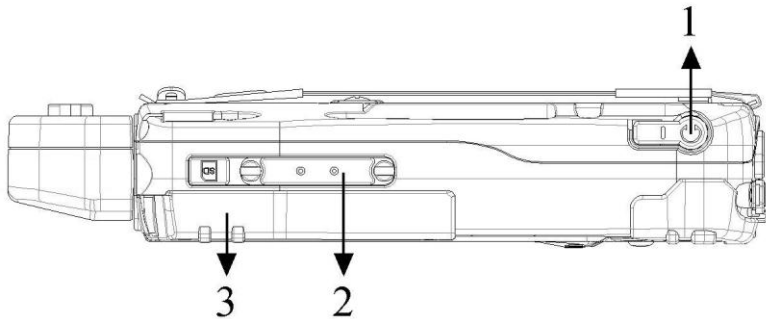


Left: (Drawing shows optional GPS)



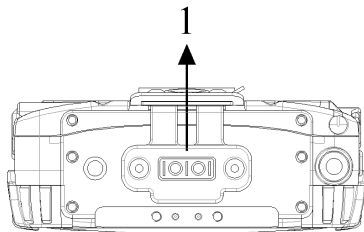
1. Antenna of Wireless Device
2. USB Client Port (Data sync with the computer).
3. USB Host Port (For Keyboard, USB Flash Storage).
4. Kensington Lock Slot

Right: (Drawing shows optional GPS)



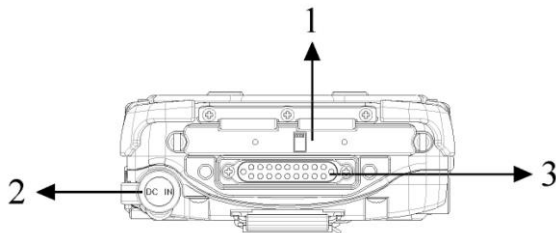
1. Microphone/Earphone Jack
2. SD I/O Slot (Secured digital card and device)
3. 2nd Antenna (Option)

Top:



1. Serial Port or GPS Antenna

Bottom:



1 PCMCIA Slot

One PCMCIA Type II Slot

CF (Compact Flash card) will be available by PCMCIA-to-CF adapter

2 DC Jack

3 Cradle Docking Connector (Connection to cradle)

Operating Environment and Ruggedness

If it is necessary to work in a hostile environment, please make sure all ports are well protected from dust, moisture, or water. Proper isolation from extreme hazardous exposure is recommended.

The computer is designed with rugged features of vibration, shock, dust, and rain/water protection. However, it is still necessary to provide appropriate protection while exposing to harsh environments.

All connectors will decay or corrode if exposed to water or moisture. Corrosion is accelerated if the power is ON. Please take proper water-resistant measures for cable connections.

The DC jack is sealed type which may be operated with water splashing while DC power cord attached. All other port caps should be in place when no cable is attached. Regularly maintain the computer by cleaning dust, water, etc. will help keeping it in optimal condition.

There is no isolated compartment for SD slot, PCMCIA slot, and docking. These ports must be tightly sealed while working with dust and water.

Notice: At low temperature both LCD and battery activity are lower. May takes up to few minutes for display to become normal, and battery capacity may decrease.

COMPONENTS AND FUNCTIONS

AC adapter

When using the AC adapter:

- Use a properly grounded AC outlet.
- Use one AC outlet exclusively for the computer. Having other appliances on the same line may cause interference.
- Use a power strip with built-in surge protection.

The AC adapter automatically detects the AC line voltage (110V or 220V) and adjusts accordingly.

Battery

The computer will automatically switch to battery power when the external power source (AC adapter) is disconnected.

Battery Power Saving Tips

- Turn OFF the LCD backlight when it is visible with external light.

-
- Lower the intensity of the backlight.
 - Shut down the computer when not to use for a longer time.

Battery Low

When the battery is nearly exhausted, the computer prompts a warning window. Once the Battery Low warning occurs, please do either or all of the following:

- Save and close the files you are currently working on.
- Plug in the AC adapter to recharge the battery.
- Swap a charged battery.

Charge Battery

- Plug in AC adapter will charge the battery automatically. If the battery is already full, the system will stop charge automatically.
- Dock to optional cradle + adapter will charge battery, too. Cradle has a battery slot to charge another battery simultaneously.
- Connect USB client cable to laptop or PC to charge battery but it needs approximately 15 hours for a full charge.

-
- The USB client connector on cradle has no battery charge function.

Swap Battery

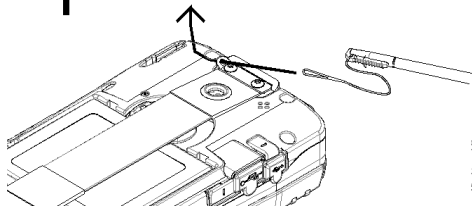
Warning: Battery swap should be done within 5 minutes to avoid data loss.

To swap the battery:

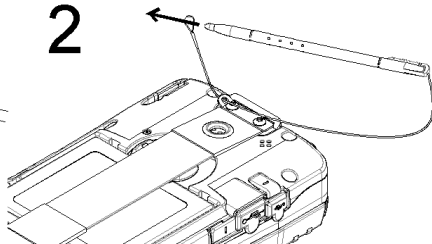
- Turn power OFF.
- Turn the battery knob counterclockwise to loosen the battery.
- Remove battery from compartment.
- Insert a new battery.
- Press the battery down and turn battery knob clockwise to lock it.
- Press power button to turn ON the computer.

Fix the stylus with tether

1



2

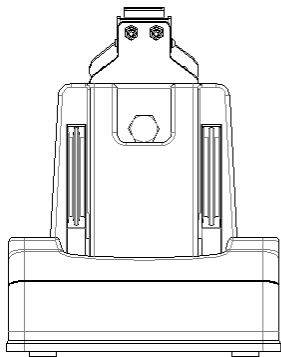


1. Tether wire through the fixing plate.
2. Stylus through tether wire.

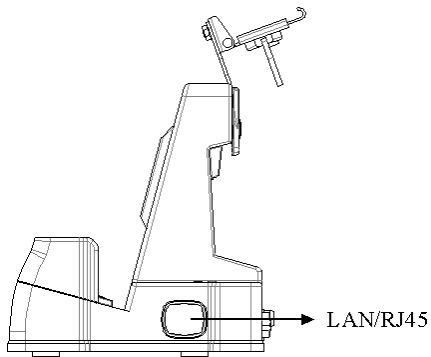
Cradle (Option)

Cradle is the device for docking, port extension, and battery charging. AC adapter may attach directly to cradle and charges the computer battery as well as spare battery. There is a battery slot on the back of cradle to mount spare battery.

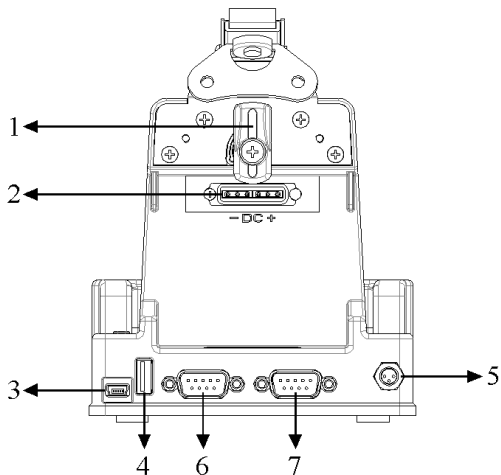
Front:



Right:



Rear:



1. Battery Lock
 2. Spare Battery Charger
 3. USB Client (No charging function)
 4. USB Host
 5. DC IN
 6. COM Port
 7. Option COM Port
- (I-version cradle w/DC in port only)

Mount the cradle:

1. Computer may dock either power is ON or OFF (recommend OFF).
2. Align the computer with cradle docking connector.
3. Firmly push the computer down to engage the docking connector.
4. Turn rotary latch to fix the computer.

Remove from the cradle:

1. Turn loose the rotary latch to release computer.
2. Pull away the computer either power is ON or OFF.

Mount spare battery: (Spare battery is optional)

Perform the same procedure as mounting primary battery on computer. Cradle will charge computer and spare battery simultaneously.

PCMCIA Slot

The PCMCIA slot accepts one type-II card. Insert the card firmly into the slot and fix the rubber cover for water/dust protection.

To remove the card, push the eject button to pop out the card. The eject button can hide into the compartment by pushing it inward gently.

It may be necessary to load PCMCIA card driver to enable the function.

Note: If the computer is working with dust, moisture, or water, is sure to fix the PCMCIA rubber cap tightly with screws.


SD Slot

The computer accepts one SD card (Secured Digital Card). Insert the card firmly into the slot and fix the rubber cover for water/dust protection. To remove the card, push the eject button to release it.

Note: If the computer is working with dust, moisture, or water, is sure to fix the SD rubber cap tightly with screws.

BASIC OPERATION

Get Help

Tap  → **Help** or **get it from companion CD**

Get the operation information from the list.

Synchronizing data with PC

Using ActiveSync, you can synchronize information on this device with information on the PC. ActiveSync is already installed on this device but you need to install it on your PC if your PC does not have it yet.

Download ActiveSync from Microsoft website.

<http://www.microsoft.com/windowsmobile/activesync/activesync42.mspx>

Follow the instructions to install ActiveSync. Once installation is complete, connect the sync cable to the device and plug it into your PC USB port.

Reset the system

(Refer “**Controls, Indicators, and Ports**” for button location)

Soft Reset

Warning: Data not saved into flash memory (in “Mounted Volume”) will be lost.

Try a soft reset when:

- The device does not respond when tapping the display.
- Or not respond when pressing a button.

To do a soft reset:

- Use the stylus to tap the **reset button** on rear.
- The reset screen prompts.
- Automatically loading programs and data.
- Reset complete.

Hard Reset

Warning: Data not saved into flash memory (in “Mounted Volume”) will be lost; all user programs will be lost

Do a hard reset when:

- To restore the device to factory default settings
- Forget the password and need to reset it
- The device is experiencing severe operational problems, and has attempted a soft reset in vain.

To do a hard reset:

- Press and hold **power button** and use stylus to tap **reset button** on rear. (Same procedure as soft reset)

Clean Boot (Emergency Clear)

Warning: All data, either in RAM or saved in flash memory (in “Mounted Volume”) will be lost, all registry and user programs will be lost, and all settings will reset back to factory default. Only OS and factory bundled programs intact

When it is necessary to **remove all data and user programs completely**, perform Clean Boot.

- Press and hold **button 4** then tap **reset button** on rear. The Clean Boot screen prompts.
- Press **button 5** to format storage (to clean flash memory data). When done, press any button turns display back to Clean Boot screen.
- Use stylus to tap **reset button** on rear again to finish reset.

Data Loss on Battery Swap

- Flash ROM (in “Mounted Volume”): Saved data & registry intact
- RAM: Data intact, user programs stored in RAM intact.

(Internal backup battery usually can hold data for <5 minutes while primary battery swapping. Exceed this period RAM data may be lost)

Data Loss on Battery Exhaust

Same as Clean Boot.

(Battery exhaust means both primary and internal back-up batteries are exhausted.)

Wireless LAN (Option)

Connect to Internet:

Turn on the Wireless Signals.

- 1.1 Press Button 1 on the keypad and screen will pop up a “Wireless Manager” dialog. (Figure 1-1 & Figure 1-2)
- 1.2 Tap “**On**” button to enable WiFi function and screen will pop up a “WLAN11G1” dialog. (Figure 1-2 & Figure 1-3)
- 1.3 Select a detected wireless Access Point in the list, for example: Amrel_WL300” (Figure 1-3).
- 1.4 Tap “**Connect**” button and the “Wireless Network Properties” dialog will pop-up.
- 1.5 Select “The key is provided automatically” checkbox to disable if the encryption key is provided automatically or Input correct encryption key on “Network key” item to make wireless function available. (Figure 1-4 & 1-5)
- 1.6 If the setting is accepted then you can see “Amrel_WL300” icon shown

connected status. (Figure 1-6)

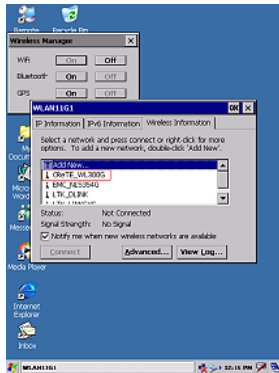
1.7 Now you can use “Internet Explorer” to browse the web. (Figure 1-7 & 1-8)



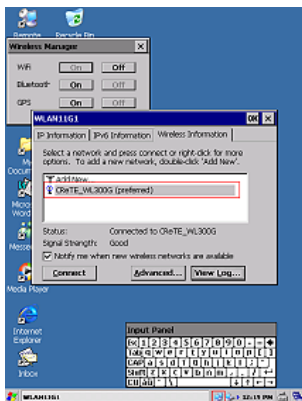
1-1



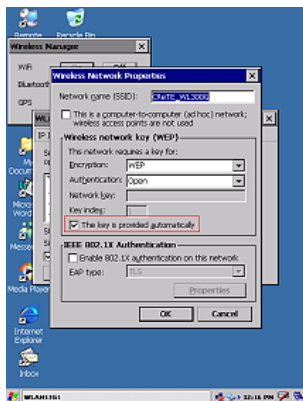
1-2



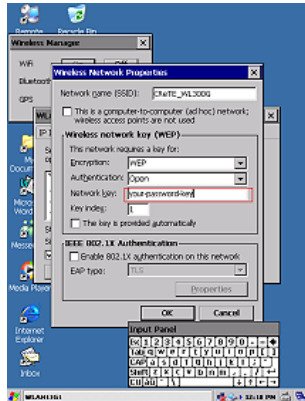
1-3



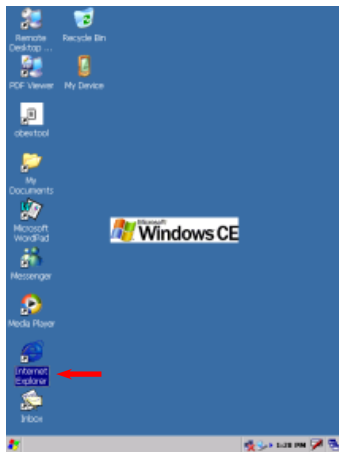
1-4



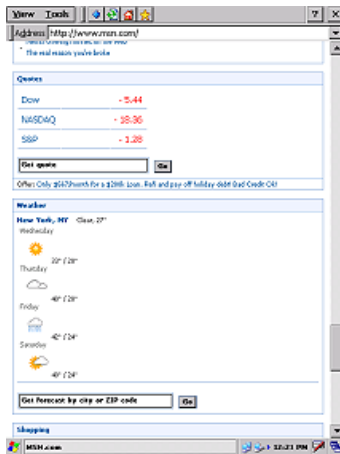
1-5



1-6



1-7

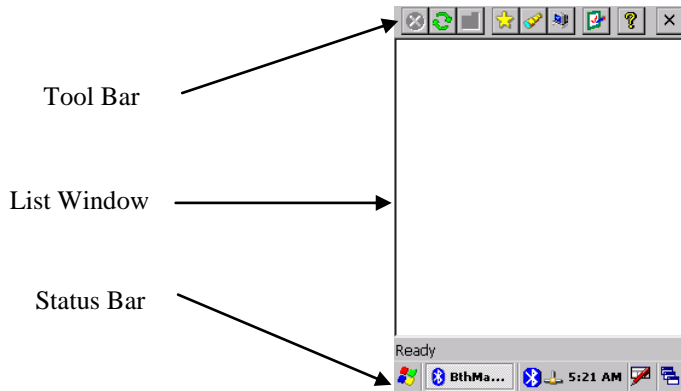


1-8

Bluetooth (Option)

Turn on the Wireless Signals.

- 1.1 Press Button 1 on the keypad and screen will pop up a “Wireless Manager” dialog.
- 1.2 Tap “On” button to enable Bluetooth function.
- 1.3 When the Bluetooth function is available, a Bluetooth PAN device will be detected and a LAN icon appears in the task bar. There are 3 profiles supported in Bluetooth manager, and must launch from **Start → Programs → Bluetooth_Manager**





The tool bar:




- 1 Stop the current action
- 2 Refresh
- 3 Parent Folder (FTP)
- 4 Show favorite list
- 5 Show distant devices
- 6 Show the about box
- 7 Configure the application
- 8 Show local service
- 9 Shut down

represented by an icon (showing what class of device they are: computer, laptop, PDA, audio device) and the name of the device.

Once you have clicked one time on  all futures clicks will show devices without inquiring (to decrease search time). To inquiry again remote Bluetooth devices you must refresh the list by clicking on . (Note: All the coupled devices are shown without inquiry)

In the list, after an inquiry, some device class and name can be not found. You can update this by right clicking on the device and select update in the contextual menu:



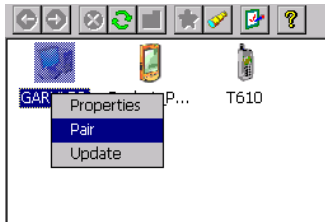
During an inquiry, you can stop it by clicking on the  icon.

Device pairing

The device pairing can be done in three ways:

- We want to be paired with another distant device.

For that the distant device must be in the list window to be paired with the current device. Right click on the selected device and click on pair.



A new window appears to insert the pin code. The pairing can be canceled by clicking on the close button or started by clicking OK button. (After typing a pin code)



- A distant device tries to pair with the current device. (With no Auto Pin Code)
When a device try to pair with the current device, a new window appear to enter the pin code selected by the distant device.
- A distant device tries to pair with the current device. (With auto Pin Code)
In this case, the user is not invited to type a pin code. It is automatically typed for him.

After the pin code is typed (or auto typed), there are two issues:



Device is not paired



Device is paired

Properties and configuration

Local services

General

In the Bluetooth Manager v1.5, there are three local services proposed to distant devices:


SPP (Serial Port): A distant device wants to establish a serial connection with the local device.

OPP (Object Push): To receive files and contact information card.

FTP (File Transfer): To access to local directories, files and upload files and create directories

Note: the OPP and FTP profile cannot be separated: You cannot deactivate one without deactivate the second.



Click on , to administrate local services. Local services are shown in the list view with a specific icon and an explicit name.

You can activate or deactivate a local service by double-clicking it or by right clicking it and selecting the Start or stop item from the contextual menu.



Serial Port

The local service is not activated.



Serial Port

The local service is activated.

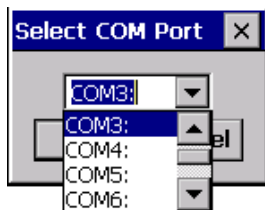
You can also configure the service by selecting the Properties Item when you right click him.

SPP Profile

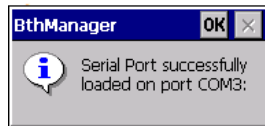
Load the SPP Server:

If the Auto Server COM Port is not checked:

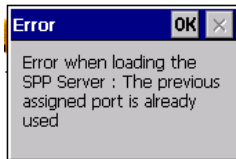
- The application shows a dialog box with all the available port COM.



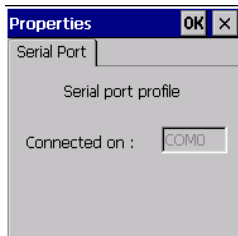
- Select the COM Port to be mapped with the SPP Server
- The Serial Port profile is activated



If the Auto Server COM Port is checked, the serial Port profile is activated with the last used COM Port for the SPP Server profile. If it is not available, an error appears.

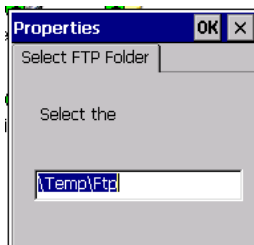


If the service is connected you can know the COM port assigned by selecting “Properties” in the contextual menu of the service.



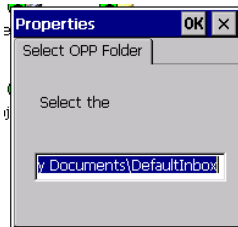
FTP Profile

You can change the directory of the FTP server (directory seen by distant device) in the service properties (Contextual menu)



OPP Profile

You can change the directory where the File sent by distant device will be put.



Local device properties and configuration

Click on :

- The local device properties (MAC address, name and device type)
- Application option (start minimized, Auto assigned COM port number for client SPP and server).
- Security options of the Bluetooth manager

Security properties

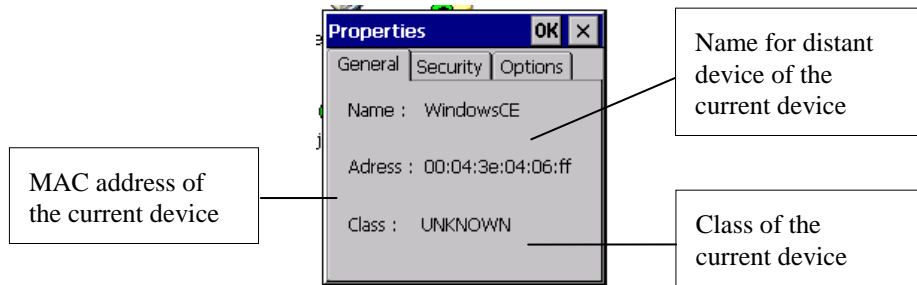
Don't show a window when a distant device wants to be paired. Auto type the PIN code number.



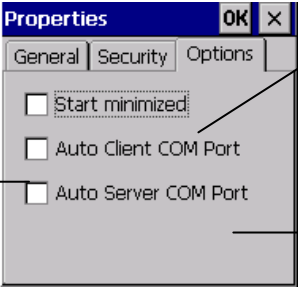
Distant devices must be paired to access local service.

The current device is visible or not from other devices.

General properties



Application properties




Check this if you want to affect the first available COM port to a SPP client connection.

Check this if you want the Bluetooth manager starts minimized.

Check this if you don't want a dialog appears when you start the SPP server. (select the COM port.)

About Box

Click on the  icon if you want some general information about the Bluetooth manager:

- Version
- License information



Distant device properties



You can have general information on a distant device (like the General tab of the Local device properties) by selecting “properties” in the contextual menu of the distant device.

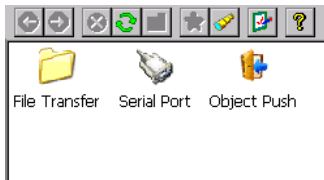


Distant Services


Services Inquiry


To inquiry the services available on a distant device, you have to double click on this one. After that, the Bluetooth manager inquiries (it indicates this in the status bar) for all the services (among SPP/FTP/OPP/DUN) of the distant device. You can stop the

inquiry with the  icon. You can also refresh the list of services by clicking on the  icon.



File Transfer

To use this service, double click on the  icon or choose connect on the contextual menu (right click). Then, the Bluetooth Manager tries to connect to the distant service. If the connection is successful, the root directory shared by the distant

will be shown in the list view. You can browse the device by double clicking on the remote folder and go to the parent directory with .

To get a file, double-click or choose “Get File” from the contextual menu. A window is displayed to indicate the transfer state.



The file is downloaded by default to the “\My Documents\Bluetooth\FTP” directory. You can change this one with the FTP properties (contextual menu of the File Transfer service).

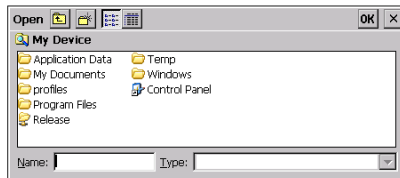
You can upload a file to the distant device by right-clicking on a white space of the list view and select Add file.



You can also delete a file by selecting delete on his contextual menu.

Object Push

To use this service, double-click on the distant service or select “Push file” on the contextual menu. Then you can choose the file to transfer.

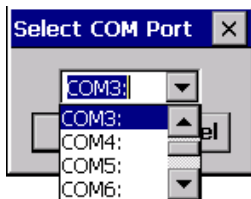


Serial Port

To use this serial service, double-click on the icon or choose “Connect” from the contextual menu.

If the Auto Client COM Port is not checked:

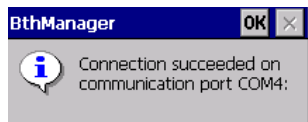
- The application shows a dialog box with all the available COM.



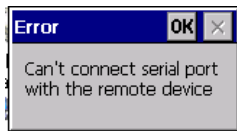
If the Auto Client COM port is checked:

- The Application selects automatically the first available COM port in the system.

If the connection is successful a message box appears:



Otherwise an error message appears:



The status of the service (connected or not) is displayed as shown below:

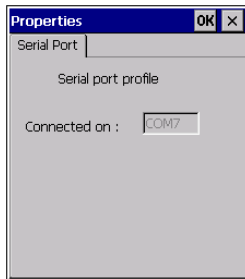


Service not connected



Service connected

When the service is on, all applications could use the virtual COM port. To know the COM port setting, select properties in the contextual menu.



When connected, the Manager can still be used as usual.

Dial-Up Networking

To use the Dial-up Networking service, double click on the icon or choose "Connect" in the contextual menu. The first available COM port in the system is assigned to the DUN profile on the selected device.

The status of the service (connected or not) is displayed as shown below:

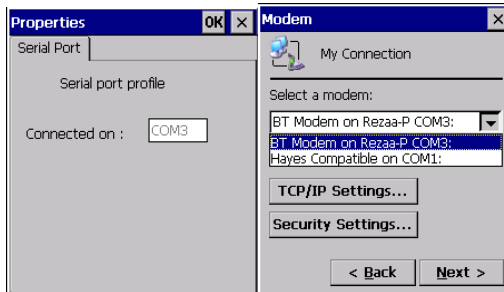


Service not connected



Service connected

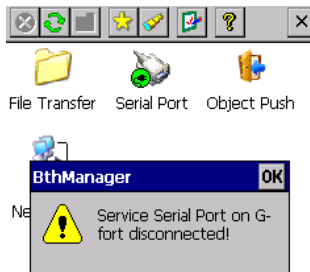
When connected, the Manager can still be used as usual. A modem associated to the COM port used by the service is created and can be used to establish a Dial-Up connection. To know the COM port settings, select properties in the contextual menu.



The modem created by the Manager is displayed in the list of available modems for Dial-Up connection when making a new connection. ("Make New Connection" icon in the "Network and Dial-Up Connection" system window).

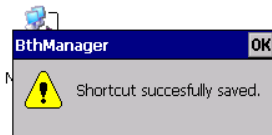
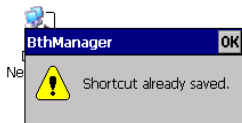
Distant disconnection management


When a connection, previously established, is shut down by the distant host (manual disconnection or connection loss due to distant device shutting down or due to a weak signal), the user is notified of the disconnection and the Manager attempts to reconnect during a time (by default, 1min30). The notification is made by a pop-up window and by changing the icon associated to the disconnected service.



Connection shortcuts management

Shortcuts associated to define services on defined devices make establishing connections with distant devices easier. A shortcut can be created by selecting the "Create Shortcut" item in the contextual menu of a connected service. If the shortcut already exists, a notification is displayed. If the shortcut is successfully created, a notification is also displayed.

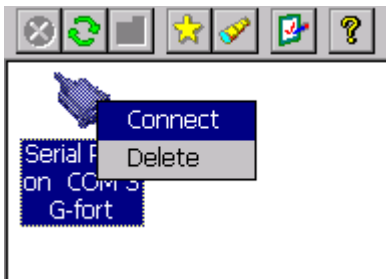


The  button in the tool bar displays the connection shortcuts list. The service, the device and, eventually, the COM port are used in the shortcut name.

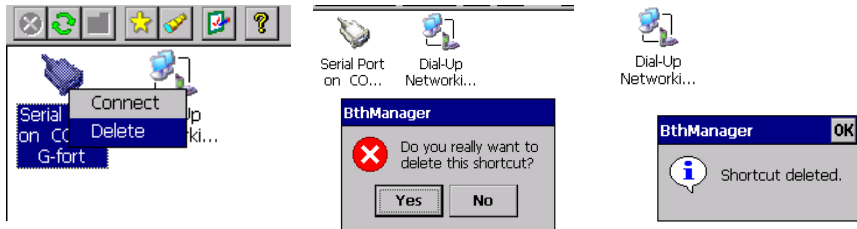


To establish a connection from the shortcut, double-click on the icon or select "Connect" in the contextual menu. Once the connection is established (even if the connection is not successfully established), the display is switched to the services list

associated to device linked to the shortcut. The connection status of the service (connected or not) is displayed not only on the service icon but also on the associated shortcut icon. However, disconnection can only be performed from the service contextual menu.



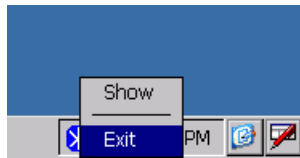
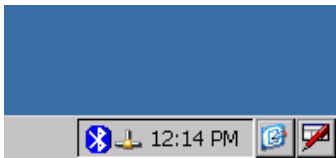
Shortcuts can be deleted by using the "Delete" item of the contextual menu. The user must confirm the deletion.



The content of the shortcut list is saved between executions of the Manager.

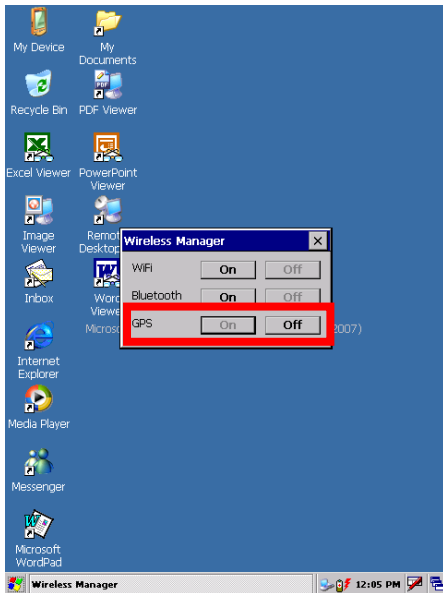
Stop the Bluetooth Manager

When the Bluetooth Manager window is closed by the close button X, the application is still running in the background. To display or stop it, click on the Bluetooth icon on the Windows bar and select: “Show” or “Exit”. You can also display it by starting again the application.



GPS (option)

- Press Button 1 to launch Wireless Manager. Click On if you want to turn on GPS signal or click Off to turn off GPS signal
- Click “X” to close the dialog and save your setting.
- GPS signal can be read from Serial Port 3 (COM3) by using 3rd party navigation software.



SPECIFICATIONS

CPU

Marvell PXA270
CPU speed 624MHz

Memory

RAM	128MB
ROM	1GB

Display

Type:	4" Active TFT Transflective Color LCD
Resolution:	480 x 640 pixels
Color:	256K
Backlight:	LED

Touch Screen

Type: Resistive

Interface: Serial

I/O ports

USB 2.0 port

USB client port

Serial port

Audio ports (Microphone/Earphone)

PCMCIA slot type II x 1

SD slot

System Unit Dimensions and Weight

Width:	90mm (W 3.5")
Depth:	150mm (H 5.9")
Height:	33mm (D 1.3")
Weight:	450g (15 oz.)

AC Adapter

Voltage:	AC 100~240 V
Frequency:	50/60 Hz
Output Voltage:	DC 12V 3A
Maximum Power:	36 Watts
Dimension:	108mm (4.2" W) x 56mm (2.2" D) x 34mm (1.3" H)
Weight:	270 g (9.5 oz.)

Battery

Type:	Lithium Ion
Capacity:	3.7V 3900mAH
Dimension:	71mm (W 2.8”) x 64mm (D 2.5”) x 12.3mm (H 0.5”)
Weight:	108 g (3.8 oz.)

Materials and Recycling

Materials of the computer are as follows:

Cabinet:	Aluminum alloy ADC-12 or A380, Magnesium alloy AZ91D, UL grade PC+ABS GE C6200 or TN-3813BW
Bracket:	Aluminum 5052 Steel with Nickel plating Stainless Steel S304
Cushion pad:	Nature rubber
PCB:	FR-4, UL 94V0
Battery:	Rechargeable Lithium Ion & Lithium polymer
Packing:	Carton: Recycled/Recyclable unbleached paper User's Guide: Recycled/Recyclable paper

Please recycle the parts according to local regulations.

MAINTENANCE / SERVICE

Cleaning

ALWAYS turn OFF the power, unplug the power cord and remove the battery before cleaning.

The exterior of the system and display may be wiped with a clean, soft, and lint-free cloth. If there is difficulty removing dirt, apply non-ammonia, non-alcohol based glass cleaner to the cloth and wipe.

An air gun is recommended for cleaning water and dust. For salty water please clean with fresh water then blow-dry with an air gun. Be sure close all caps tightly before water cleaning.

Troubleshooting

Should the computer fail to function properly, the troubleshooting steps below may be followed. (Please backup your data before troubleshooting)

- Check AC adapter, battery, and the power source.

-
- Perform soft reset to re-boot the computer.
 - Remove the software suspected.
 - Perform hard reset to re-boot the computer.

RMA Service

If troubleshooting steps are unsuccessful, consult your dealer for RMA.

Shipping instructions:

1. Remove any personal diskettes, CD's, or other media.
2. Use the original shipping container and packing materials, if possible.
3. If the original packing materials are not available, wrap the equipment with soft material (e.g. PU/PE form) then put the wrapped equipment into a hard cardboard shipping box.
4. Include a sheet with the following information: (Note: Please keep a copy of this sheet for your records)
 - Name.

-
- Address.
 - Unit serial number.
 - Place and date of purchase or the original invoice number.
 - Date of failure.
 - A DETAILED Description of the problems you have encountered.
 - A list of the hardware/software configuration, if applicable.
5. Clearly mark the outside of the shipping box with the RMA #. If a RMA # is not present on the shipping box, receiving will be unable to identify it and it might be returned.
 6. Unless prior arrangements have been made, the customer is responsible for all shipping costs. Unauthorized use of the company's shipping accounts is not permitted.

Recycled / Recycleable
Printed in USA
G630904000B